

SLIMDUCT SD

Lake Side Retreat Relies on Slimduct SD Black Protection and Style

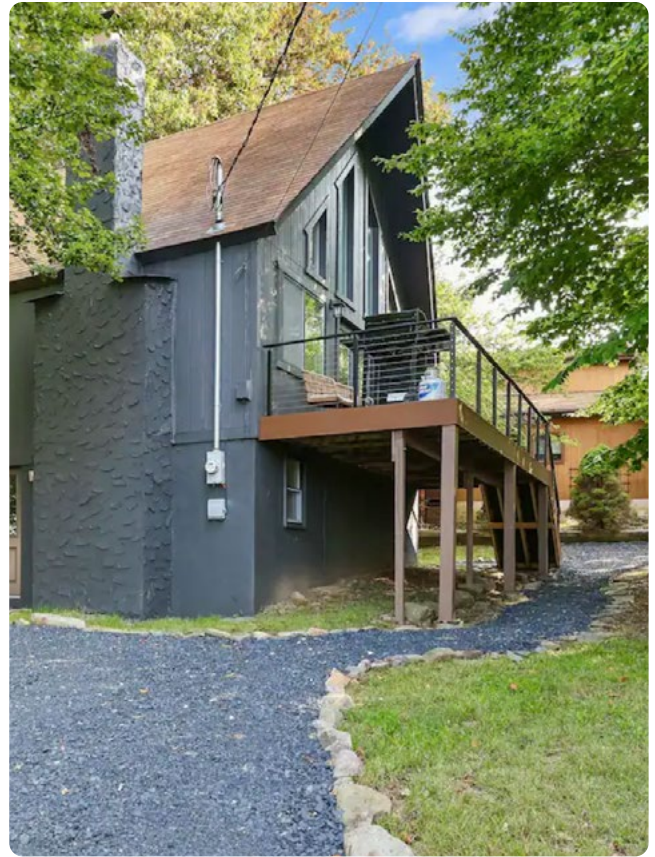
A charming chalet by Lake Carobeth in Tobyhanna, PA, was undergoing a number of upgrades. This vacation property, soon to be listed on short-term rental sites, will become the newest retreat available in the Poconos region.

With temperatures in the region varying from below 2°F in the winter and above 86°F in the summer, installing the proper HVAC system was key. The owner, contacted Andrew Dariychuk, who teamed up with James Belousov from Premier Climate LLC. to conduct this job. They suggested the installation of a ductless mini-split system with 5 heads strategically placed to make this 3 bedroom 2 bathroom property a comfortable retreat.

The owner was on board with the idea, but requested the use of a black lineset cover to complement the chalet colors. “I’ve been using Slimduct SD lineset covers for many years, and had seen the Black lineset on many installations in Europe. I knew the Slimduct SD Black would be the perfect fit for this project.” Said Andrew.

Once they had the Slimduct SD Black in hand they got to work. First the lineset route was selected. Starting with the wall inlets, and making clean exit holes. Once the base of the SW wall inlets were secured with screws on the property exterior, they measured and ran the SD straight ducts, ensuring they were straight and leveled, using proper strapping techniques and properly sealing all holes along the way.

Using some of the Slimduct SD flat elbows and vertical elbow, they cleanly maneuvered to the contours of the home. The use of the Slimduct SD Tee to bring two pieces of the system together, made for a very clean transition. The decision to run each UV resistant drain line out of the 90’s, and cleanly strap to the home was a nice touch. So, not only does the Slimduct look great, it is set to stay up and dry for a very long time.



Project Info

- Location: Tobyhanna, PA
- Building type: Chalet
- Project type: Existing building, new installation
- Square footage: 1,620 sq ft
- Minisplit manufacturer: Fujitsu
- Mechanical contractor: Premier Climate LLC

“Slimduct SD is my go to lineset cover. The quality of the material gives me the assurance of a job well done, and happy customers. The chalet owner was very pleased with chalet look.” Said James.

Providers Contact

Premier Climate LLC.

premierclimate@gmail.com

(717) 826-7490

About

Premier Climate LLC. Is a full-service HVAC company servicing the Lancaster county and surrounding areas of PA. Premier Climate takes pride on hard work, exceptional quality and the great service provided to its customers.

Inaba Denko America supplies HVAC accessory solutions such as Slimduct, Parcoil, DSH-Up, LineBrace and more engineered by Inaba Denko of Japan and provides support for distributors and contractors throughout North America. Our brands represent quality, precision, and durability. Primary products include copper line sets, line set covers, drain hoses, and mounting systems ideal for mini split, VRF, ducted, ductless and heat pump installations.



Slimduct SD

Is a high-grade PVC lineset cover, manufactured by Inaba Denko. Synonym of quality, Slimduct SD is trusted by contractors worldwide for over 40 years. Slimduct SD and many other mini-split accessories such as drain hoses, lineset, condenser risers are available in the US.



**Learn more about
Slimduct SD**