



INTRODUCES

## SLIMDUCT™ PD

Elevate lineset protection and installation appearance

Our Slimduct PD Commercial Lineset Cover System is the durable and attractive solution to protect any surface-mounted lineset installation on commercial rooftop buildings. It also offers the added versatility to be used for HVAC and plumbing installations, or as a lineset cover between the condenser and Slimduct RD System.

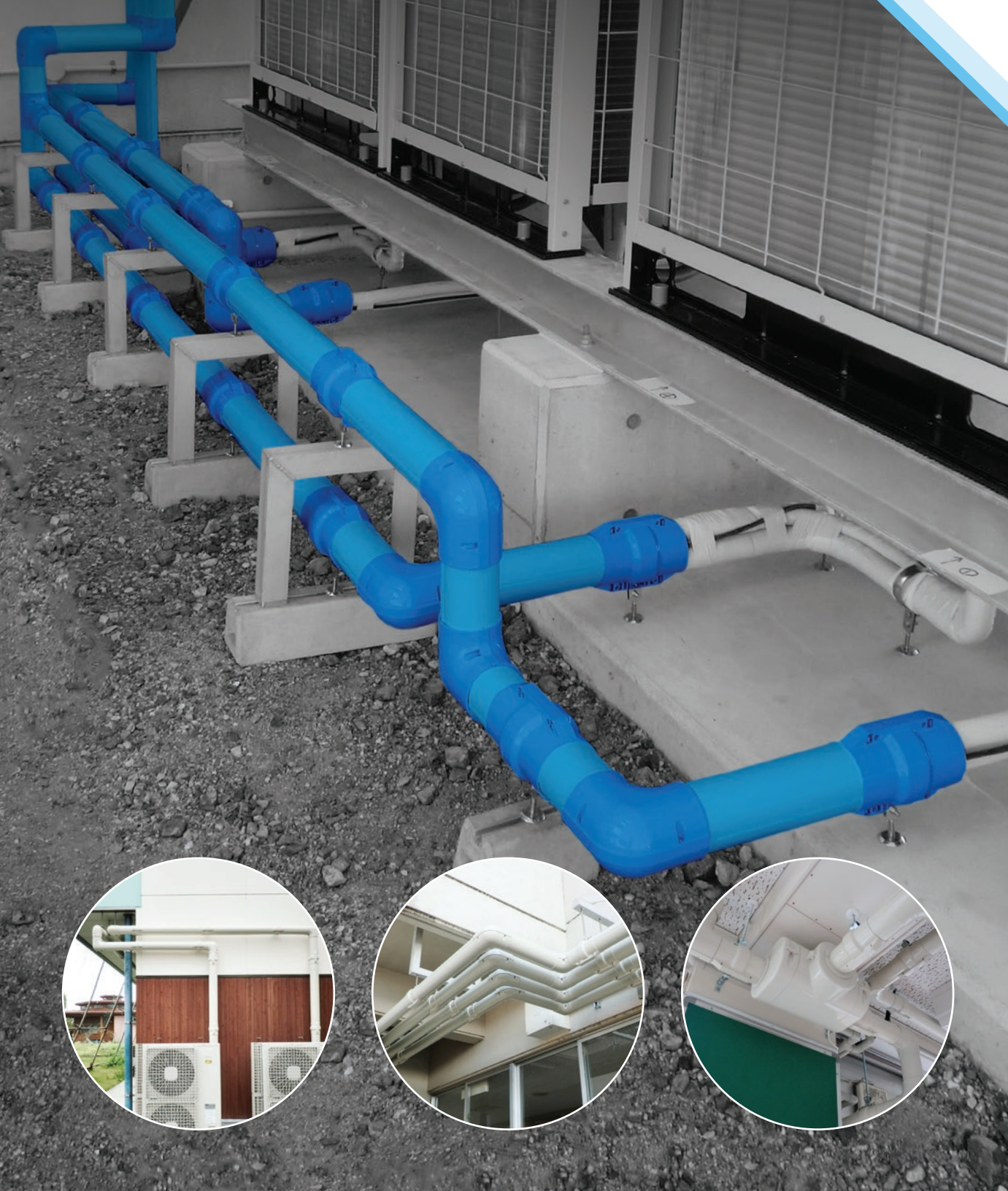
Using less space than a conventional racking system, its compact design optimizes limited space, while simplifying routine maintenance. Available in three different sizes to accommodate larger linesets, Slimduct PD is constructed from a high-grade PVC that is weather resistant, UV stabilized and fire retardant. Easy to install, Slimduct PD elevates linesets from the wall, ceiling, or deck surface.

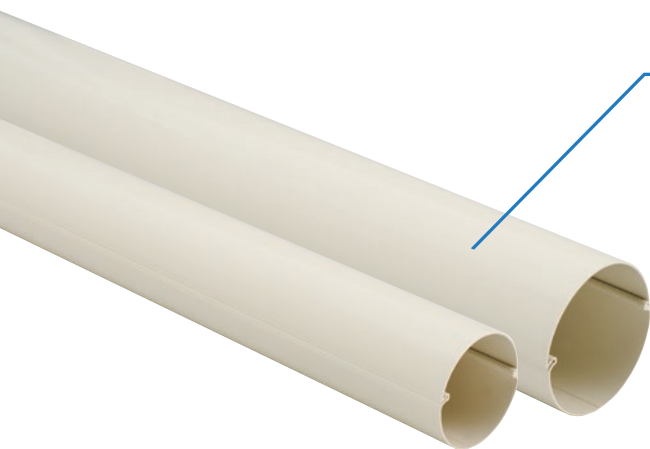
### TECHNICAL SPECS

- **Weather Resistance:** Tested to over 2,000 hours (JIS D 0205, SWOM TEST)
- **Temperature Range:** -4°F to 140 °F
- **Size:** 3-1/2, 4-5/8, and 5-3/8 inch



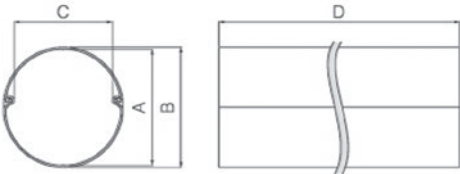
To find out more, visit:  
[www.InabaDenko-America.com](http://www.InabaDenko-America.com)





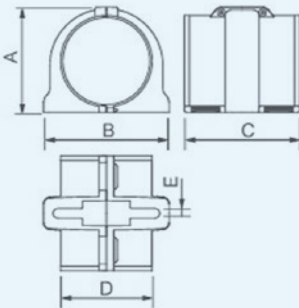
PD Straight Duct

Code No	Item No.	A	B (O.D.)	C (I.D.)	D	Pcs/Pkg
C 68302	PD-90-1000-I	3-1/2"	3-1/2"	3"	37-7/8"	5
C 68312	PD-90-1500-I	3-1/2"	3-1/2"	3"	57-1/2"	5
C 68322	PD-90-2000-I	3-1/2"	3-1/2"	3"	78-3/4"	5
C 68332	PD-120-1000-I	4-5/8"	4-5/8"	4-1/8"	37-7/8"	5
C 68342	PD-120-1500-I	4-5/8"	4-5/8"	4-1/8"	57-1/2"	5
C 68352	PD-120-2000-I	4-5/8"	4-5/8"	4-1/8"	78-3/4"	5
C 68632	PD-140-2000-I	5-3/8"	5-3/8"	5"	78-3/4"	5



PDBK Mounting Coupler for Bracket

Code No	Item No.	Inserting depth of duct	Applicable PD duct	Applicable U shape clamp or band (width: 1" or less)	A	B	C	D	E	Pcs/Pkg
C 68362	PDBK-90-I	2"	PD-90	2-5/8" 3-1/4"	4-1/2"	5-1/4"	4-7/8"	4-1/8"	1/2"	10
C 68372	PDBK-120-I	2"	PD-120	3"	5-5/8"	6-3/8"	4-7/8"	5-1/8"	1/2"	5



PDB-N Mounting Coupler

Code No	Item No.	A	B	C	D	E	Pcs/Pkg
C 68572	PDB-90N-I	4-1/2"	5"	5"	5-1/8"	2"	10
C 68582	PDB-120N-I	5-5/8"	6-1/8"	6-1/8"	5-1/8"	2"	5
C 68592	PDB-140N-1	6-5/8"	7-1/4"	7-1/4"	5-3/8"	2-1/8"	5

