



INTRODUCES

# SLIMDUCT™ RD

The attractive solution to gain maximum protection

August 30, 2021

# SLIMDUCT™ RD



Heavy duty material



Sleek appearance and compact design



Quick and easy installation



Field configurable to any orientation



Better access for building maintenance



Low total cost of ownership

# Traditional Installation

## Option 1 – No protective covers or lids

Linesets exposed on metal trays, mesh wires, and stand brackets

## Challenges

- Lineset appearance is unsightly
- Exposure to UV light, rainwater, pollution, and vulnerability to accidental damage, or vandalism may cause severe insulation damage. This can lead to gas leakage from copper piping and reduced energy efficiency of air conditioners



# Traditional Installation

## Option 2 – Jacketing

Jacketing provides rudimentary protection

### Challenges

- Appearance is unsightly
- Wastes space and cannot accommodate multiple linesets
- Can easily deform or crack from exterior force or pressure
- Can rust or degrade due to exposure to elements
- Installation is labor intensive and costly
- Ongoing lineset maintenance is difficult to perform



# Traditional Installation

## Option 3 – Sheet Metal

Linesets encased by sheet metal

### Challenges

- Creates an unfinished and unsightly appearance
- Wastes space and is too bulky to accommodate linesets
- Can easily deform or crack from exposure to elements
- Can also rust or degrade due to exposure to elements
- Difficult and time consuming to transport and install
- Ongoing lineset maintenance is difficult to perform

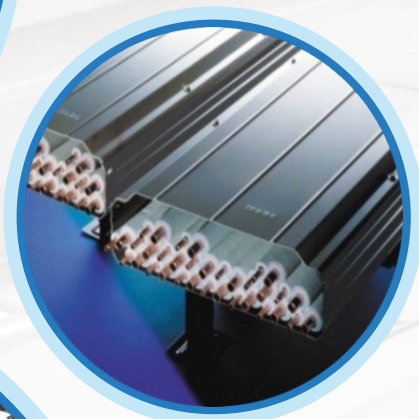


# **SLIMDUCT™ RD**

## **The Professional Lineset Solution**

A lineset system on any commercial building will be enhanced by the sleek appearance of a finished Slimduct installation.

**Property owners benefit from higher property values due to using the Slimduct RD**



# SLIMDUCT™ RD

- **Multiple Applications**

Easily customize any Slimduct RD installation in any orientation through the use of various fittings such as risers, vertical mountings, and under-slab mountings.

NOTE: Excludes some sizes.

- **Compact Design**

Its sleek design requires less space than traditional installations, and it can accommodate multiple linesets in one run.

**Optimizes limited roof space on buildings**



# SLIMDUCT™ RD

- **Easy Installation**

No special tools are required to assemble. It connects together with only two kinds of screws, which are included.

- **Easy Maintenance for AC Units**

Our WALKWAY type system features an anti-slip surface that permits personnel to walk on ducts without damaging the Slimduct RD or protected linesets during routine mechanical maintenance.

- **Easy Maintenance for Linesets**

When maintenance is required, the personnel can gain quick access to linesets protected by the Slimduct RD.

**Reduces labor costs related to on-site HVAC maintenance**



# SLIMDUCT™ RD

- **Durability and Weather Resistance**

The Slimduct RD is fabricated from a material that is salt resistant, offering even better corrosion-resistance than stainless steel; particularly in corrosive coastal environments. It is made from a hot-dipped galvanized steel sheet coated with a layer comprised of zinc, 6% aluminum, and 3% magnesium.

- **Scratch and Abrasion Resistance**

The Slimduct RD is more rigid than a standard galvanized sheet. It features a coating that contains a higher proportion of magnesium. This ensures that any scratch or cut edges will be covered by a zinc protective film in a few months.

**If used properly, it's not necessary to replace the SLIMDUCT RD**

# SLIMDUCT™ RD

## Proven Throughout the World

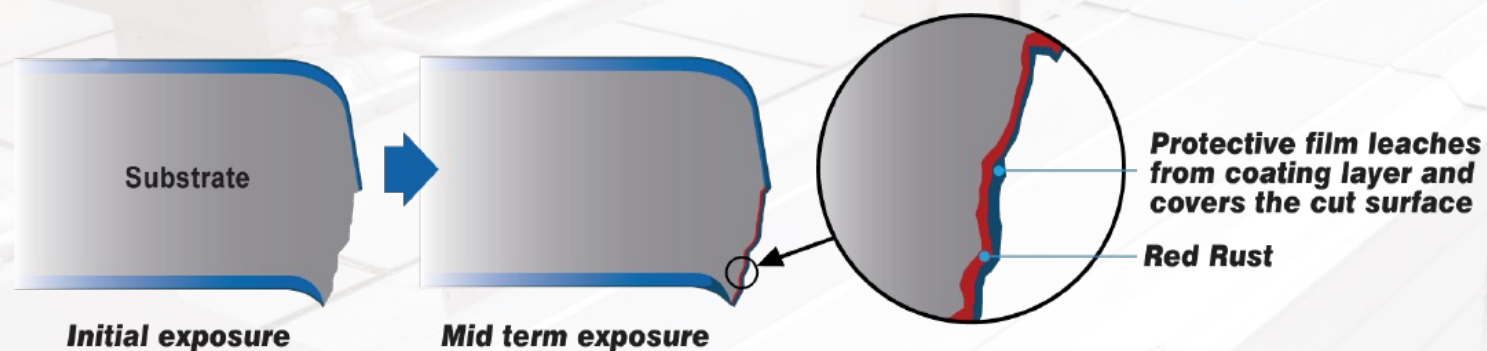
From its roll-out in 1988, the Slimduct RD has been gaining acceptance from markets throughout the world, including Japan, the USA, Mexico, the UK, Taiwan, Hong Kong, Indonesia, Thailand, and India.

**The SLIMDUCT RD is the proven solution for building owners and HVAC contractors**



# SLIMDUCT™ RD

- **Material**  
Highly corrosion-resistant hot-dip galvanized steel sheet which has a coating layer of zinc, 6% aluminum, and 3% magnesium.
- **Mechanism of Corrosion Resistance**
- **Salt Tolerance**  
Salt Resistant
- **Stretch**  
More than 28%



**Delivers outstanding performance  
over the lifetime of AC units**



# SLIMDUCT™ RD

- **Size: 35 Combinations**

Width: 6", 11-7/8", 17-3/4", 23-5/8", 35-1/2"

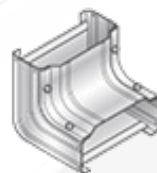
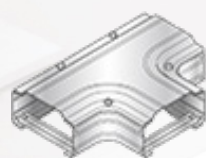
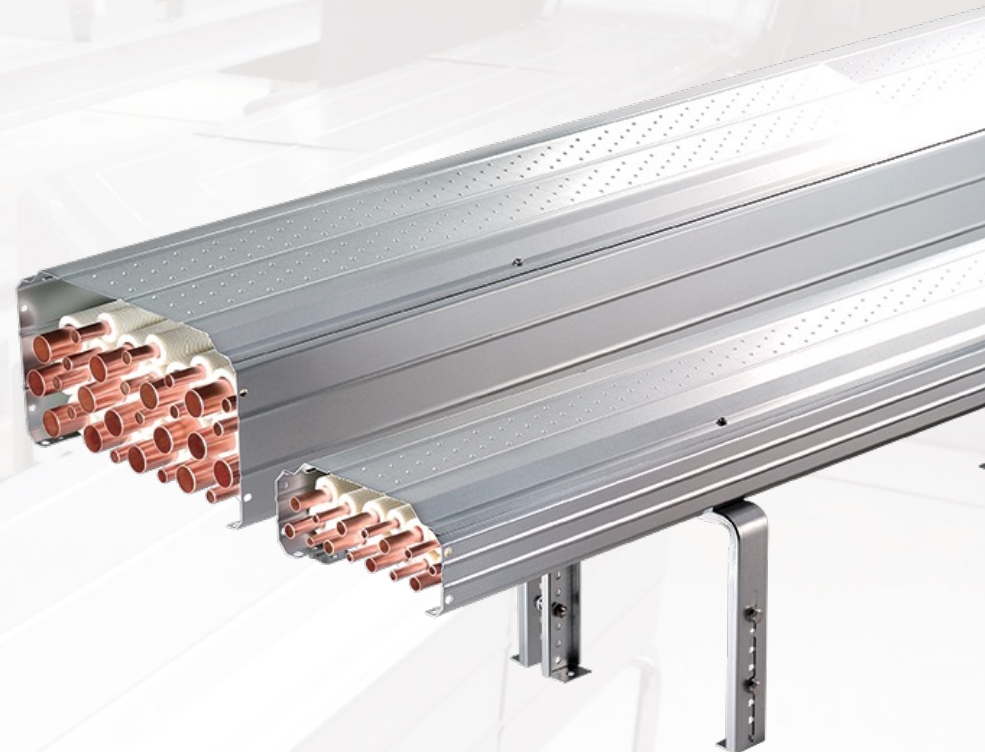
Height: 4-3/8", 5-3/8", 10"

Length: 11-7/8", 19-3/4", 39-3/8", 8-3/4"

- **Fittings/Parts: 296 SKUs**

Primary, Supplementary, and WALKWAY types

The SLIMDUCT RD can adapt to any complicated configuration



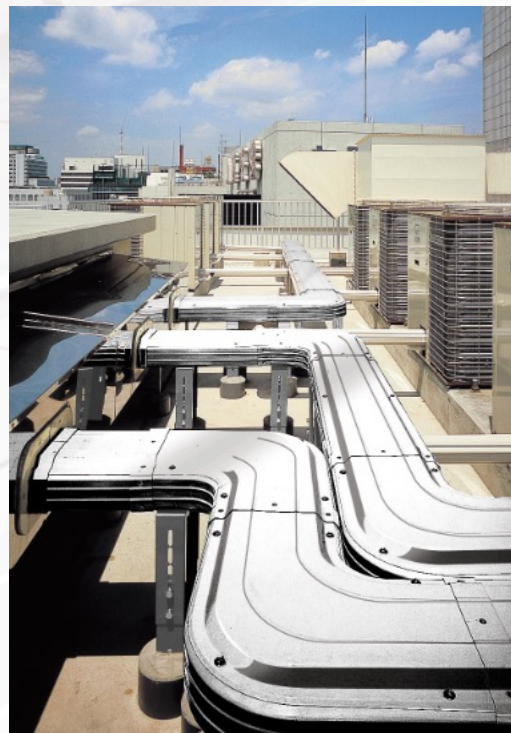
# SLIMDUCT™ RD

[RD Size Calculator Download](#)


Item#	Insulation thickness	Lineset size (Liquid line x Suction line)											
		1/4" x 3/8"	1/4" x 1/2"	1/4" x 5/8"	3/8" x 5/8"	3/8" x 3/4"	1/2" x 1 1/8"	5/8" x 1 1/8"	5/8" x 1 1/4"	3/4" x 1 1/4"	3/4" x 1 1/2"	7/8" x 1 1/2"	7/8" x 1 5/8"
RD-150	1/2" X 1/2"	3	2	2	2	2	1	1	1	1	1	1	1
	3/4" X 3/4"	1	1	1	1	1	1	1	1	1	0	0	0
RD-300	1/2" X 1/2"	6	6	5	5	4	2	2	2	2	2	2	2
	3/4" X 3/4"	2	2	2	2	2	2	2	2	2	2	1	1
RD-300H	1/2" X 1/2"	15	13	12	12	10	8	8	6	6	6	6	4
	3/4" X 3/4"	8	7	7	7	6	4	4	4	4	4	3	3
RD-400	1/2" X 1/2"	10	8	7	7	6	4	4	4	3	3	3	3
	3/4" X 3/4"	4	4	4	4	3	3	3	3	3	3	2	2
RD-450H	1/2" X 1/2"	23	20	18	18	15	12	11	10	10	8	8	6
	3/4" X 3/4"	13	11	10	10	9	6	6	6	6	6	5	5
RD-600	1/2" X 1/2"	13	12	10	10	9	5	5	5	5	4	4	4
	3/4" X 3/4"	5	5	5	5	5	4	4	4	4	4	3	3
RD-600H	1/2" X 1/2"	31	26	24	24	19	14	14	13	13	13	11	8
	3/4" X 3/4"	17	14	14	14	12	8	8	8	8	8	7	7
RD-900	1/2" X 1/2"	20	17	16	16	13	8	8	8	7	7	7	6
	3/4" X 3/4"	8	8	8	8	7	6	6	6	6	6	5	5
RD-900H	1/2" X 1/2"	46	40	37	36	30	24	21	20	20	14	14	13
	3/4" X 3/4"	26	22	22	21	18	13	13	13	12	11	11	11

NOTE: Nominal lineset capacities for SLIMDUCT RD can differ according to the configuration of lineset installed. Capacities shown are based on Net Usable Section Area of each duct size and are for reference only.

# SLIMDUCT™ RD

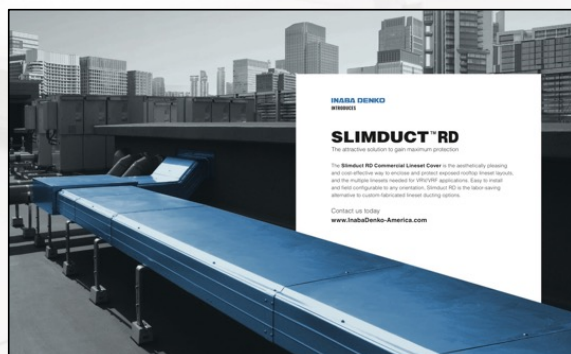


For further information, refer to our catalog or the Installation Manual on our website.

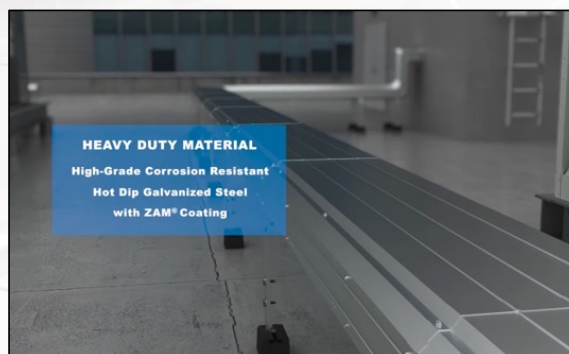


# Marketing Materials

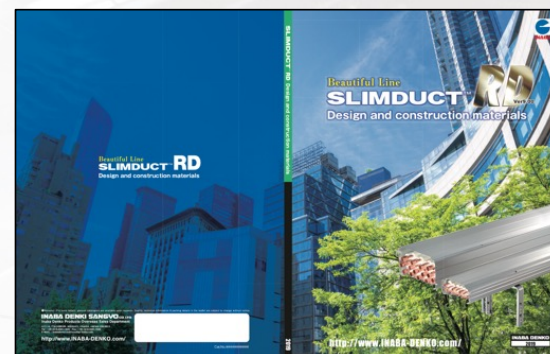
Brochure



Product Animation



Installation Manual



Product Catalog





**Inaba Denko America**

20130 S. Western Avenue Torrance, CA 90501

Tel: 310-328-3222

Fax: 310-328-2676

E-mail: [info@inabadenko-america.com](mailto:info@inabadenko-america.com)

Web: [InabaDenko-America.com](http://InabaDenko-America.com)