



SLIMDUCT™ SD

The protective finishing touch for your installation

August 24, 2021



Architectural Linesets Cover



Sophisticated Appearance



Long-term Protection



Easy Assembly and
Quick Installation



Various Fittings and Colors

Set a Higher Standard

Architectural Lineset Cover

- The Slimduct SD with its various fittings is the perfect solution to conceal, beautify, and protect exposed linesets. It will work with any split air conditioner system.



Set a Higher Standard

With a more sophisticated appearance

- With its polished surface and stylish compact design, Slimduct SD blends well into any interior or exterior setting.

Installations without Slimduct look unprofessional

It results to exposing linesets and sheet metal

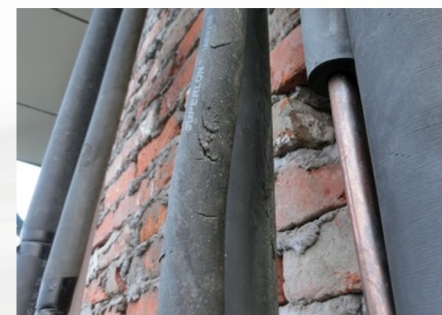
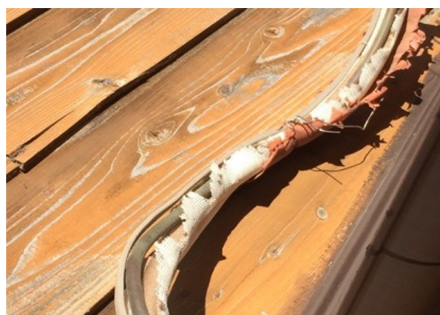


Higher Standards of Quality

For continual and lasting protection

- Slimduct SD is constructed from a special high-grade PVC for superior UV and weather protection. It will protect linesets from exposure to sunlight, rainwater, pollution, pests, vandalism, or accidental damage.

The damages that occur from exposed linesets:

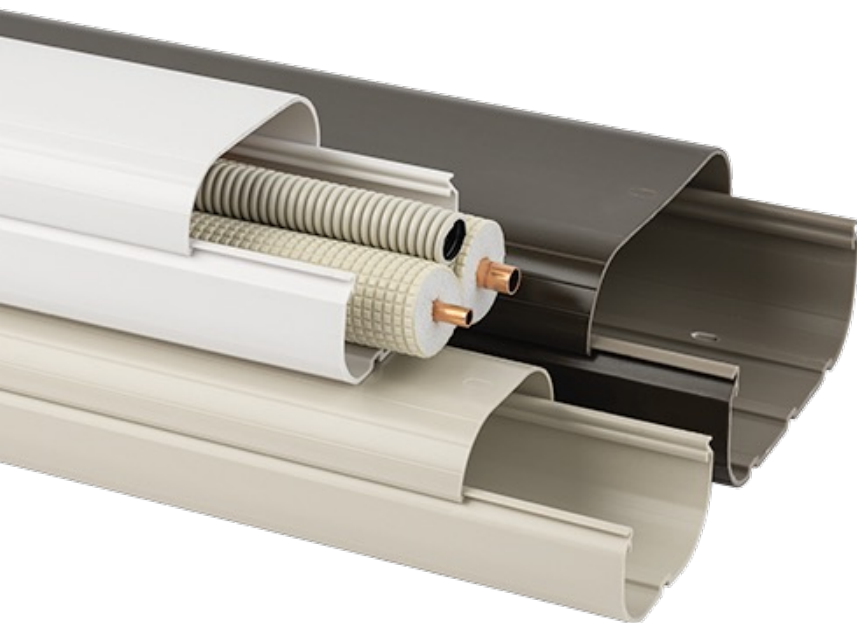


- Longtime exposure will lead to the insulation crumbling.
- Dew condensation and corrosive substances will likely form on copper pipes, creating a chemical reaction that leads to the formation of pinholes.
- Pinholes may develop into gas leaks, which will lead to costly repairs for homeowners.

We Make it Simple

Easy Assembly

- The straight duct cover easily clips onto the base for a tight seal.



Quick Installation

- **Slimduct Cutter** is the efficient way to cut the Slimduct SD. Hacksaws may be used as well.



How to install
Slimduct SD



Note: For further information, please refer to SLIMDUCT SD Instruction Manual

We Make it Simple

Multiple Configurations

- We offer 295 different fitting choices, making it easy to accommodate even the most complicated installations.



Various Colors



White



Ivory



Brown



Gray



Black

Note: Dark colors fade in sunlight sooner than lighter colors

SLIMDUCT™ SD

Technical Specifications

Material: Weather resistant, UV stabilized, and flame retardant PVC. Excludes some items.

Temperature Range: -4°F to 140°F

Application: Wall mounted

Lineset Capacity

Item #	Insulation Thickness	Lineset Size (Liquid Line x Suction Line)												
		1/4" x 3/8"	1/4" x 1/2"	1/4" x 5/8"	3/8" x 5/8"	3/8" x 3/4"	3/8" x 7/8"	1/2" x 1 1/8"	5/8" x 1 1/8"	5/8" x 1 1/4"	3/4" x 1 1/4"	3/4" x 1 1/2"	7/8" x 1 1/2"	7/8" x 1 5/8"
SD-77	1/2" x 1/2"	1	1	-	-	-	-	-	-	-	-	-	-	-
	3/4" x 3/4"	-	-	-	-	-	-	-	-	-	-	-	-	-
SD-100	1/2" x 1/2"	1	1	1	1	1	1	-	-	-	-	-	-	-
	3/4" x 3/4"	-	-	-	-	-	-	-	-	-	-	-	-	-
SD-140	1/2" x 1/2"	3	2	2	2	1	1	1	1	1	1	1	1	1
	3/4" x 3/4"	1	1	1	1	1	1	1	1	-	-	-	-	-

*Includes Drain Hose (O.D 7/8) and Power/Control Cables.

Size: 3" SD-77, 4" SD-100, 5-5/8" SD-140

Color: White, Ivory, Brown, Gray, Black

Weather Resistant: Tested to over 2,000 hours.

Fixing Screw: Stainless steel

Comparison with competitors

Company	INABA DENKO	DIVERSITECH		MITSUBISHI	COVERGUARD	SAUERMANN
Brand	SLIMDUCT SD	SpeediChannel	EasyGuard	LINEHIDE (INOAC Clean Duct)	COVERGUARD	Easy Lineset Duct
Width	3", 4", 5-5/8"	3", 4", 6"	3", 4"	2-15/16", 3-7/8", 5-7/16"	*Expandable height	3", 4"
Length (Duct)	appx.78-3/4"	78"	78"	78-3/4"	48", 78"	78"
Color	White, Ivory, Black, Gray, Brown	White, Ivory, Brown	White	Ivory	White, Gray, Brown	White
Fittings	27	21	10	16	12	13
Country of Origin	Japan, Vietnam, Thailand	U.S.A.	Belgium	China	China	Italy

Source: Information on literature or our in-house research as of 8/23/2021.

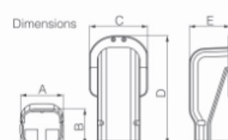
**Cross reference with competitors
available on our website**



SLIMDUCT™ SD

Full Product Line

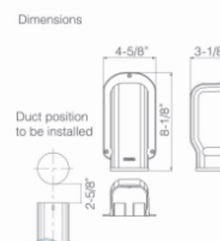
SW WALL INLET



Code No.	Item No.	A	B	C	D	E	Pcs/Pkg*
C 0412	SW-77	3-3/8"	2-5/8"	4-3/8"	8-1/8"	3-1/8"	60 (20)
C 0413	SW-100	4-3/8"	3"	5-1/8"	8-7/8"	3-1/2"	10 (10)
C 0414	SW-140	5-3/4"	3-3/8"	6-5/8"	11-1/8"	3-7/8"	5 (5)

* () shows quantities of Gray, White, Black, and Brown.

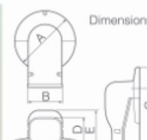
SWA WALL INLET for Base-Free



Code No.	Item No.	Pcs/Pkg
C 0429	SWA-77	20

*It is not guaranteed to fit in this item with every existing pipe installation. Check the job site before use.

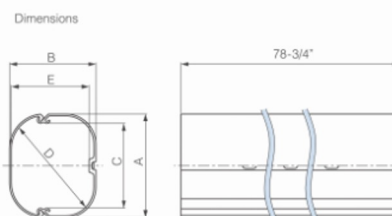
SWM WALL INLET for A/C Cap



■ Applicable size of A/C cap			
Item No.	Flange O.D.	Flange Height	
SWM-77	φ 5-1/8"	~ 3/8"	
SWM-77L	φ 6"	~ 3/8"	
SWM-100	φ 6"	~ 3/8"	

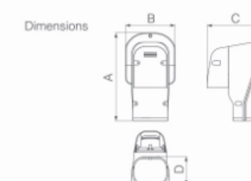
Code No.	Item No.	A	B	C	D	E	Pcs/Pkg
C 0408	SWM-77	5-7/8"	3-1/4"	7-1/2"	2-3/4"	3-3/8"	10
C 0407	SWM-77L	6-3/8"	3-1/4"	8-1/4"	2-3/4"	3-3/8"	10
C 0409	SWM-100	6-5/8"	4-1/4"	8-1/2"	3"	3-3/4"	10

SD STRAIGHT DUCT



Code No.	Item No.	A	B	C	D	E	Pcs/Bundle
C 0402	SD-77	3"	2-1/2"	2-3/8"	2-3/8"	3"	15
C 0403	SD-100	4"	2-7/8"	3-1/2"	3-1/2"	4"	10
C 0404	SD-140	5-5/8"	3-1/4"	4-7/8"	4-7/8"	5-3/8"	5

SWK WALL INLET for A/C with Ventilation



Code No.	Item No.	A	B	C	D	Pcs/Pkg
C 7352	SWK-77N	8-1/8"	4-5/8"	5"	2-3/4"	10

■ Material... PVC + ABS (at lattice)

SLIMDUCT™ SD

Full Product Line

SK 90° FLAT ELL



Code No.	Item No.	A	B	C	D	Pcs/Pkg*
C 0422	SK-77	3-1/4"	2-5/8"	5-1/8"	7/8"	60 (20)
C 0423	SK-100	4-1/4"	3"	6"	7/8"	10 (10)
C 0424	SK-140	5-3/4"	3-3/8"	7-1/2"	1-1/4"	5 (5)

*() shows quantities of Gray, White, Black, and Brown.

SWX WALL INLET for A/C Cap and A/C with Ventilation

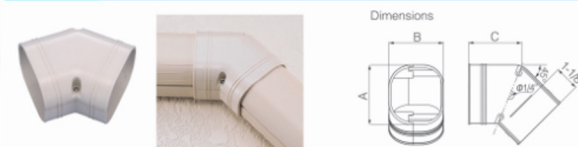


Code No.	Item No.	A	B	A/C Cap Size		Pcs/Pkg
				Flange O.D.	Flange Height	
C 0410	SWX-77	5-7/8"	7-7/8"	5-1/8"	1/2"	10
C 0415	SWX-77L	6-3/8"	8-1/4"	6-1/8"	1/2"	10

Color ... 77 = Ivory, Brown, Black, Gray
 77L = Ivory, Brown, Black, Gray, White

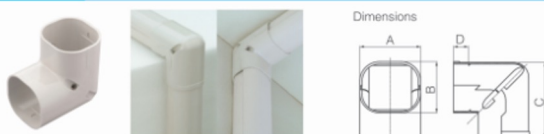
Material ... PVC + ABS (at lattice)

SKF 45° FLAT ELL



Code No.	Item No.	A	B	C	Pcs/Pkg
C 7312	SKF-77	3-1/4"	2-3/4"	2-5/8"	20
C 7313	SKF-100	4-1/4"	3"	3"	10
C 7314	SKF-140	5-7/8"	3-3/8"	3-5/8"	5

SC 90° VERTICAL ELL



Code No.	Item No.	A	B	C	D	Pcs/Pkg*
C 0432	SC-77	3-1/4"	2-3/4"	4"	7/8"	60 (20)
C 0433	SC-100	4-1/4"	3"	4-5/8"	1-1/4"	10 (10)
C 0434	SC-140	5-3/4"	3-3/8"	5"	1-1/4"	5 (5)

*() shows quantities of Gray, White, Black, and Brown.

SCM 90° MINI VERTICAL ELL



Code No.	Item No.	A	B	C	Pcs/Pkg
C 7322	SCM-77	3-1/4"	2-3/4"	3-1/4"	20

SCF 45° VERTICAL ELL



Code No.	Item No.	A	B	C	Pcs/Pkg
C 7332	SCF-77	3-1/4"	2-3/4"	2-1/2"	20
C 7333	SCF-100	4-1/4"	3"	2-5/8"	10
C 7334	SCF-140	5-7/8"	3-3/8"	2-3/4"	5

SLIMDUCT™ SD

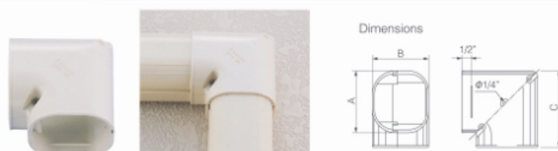
Full Product Line

SKS ADJUSTABLE FLAT ELL 45° to 90° corner



Code No.	Item No.	A	B	Pcs/Pkg
C 0538	SKS-77	3-1/4"	2-3/4"	10
C 0539	SKS-100	4-1/4"	3"	10

SKM 90° MINI FLAT ELL



Code No.	Item No.	A	B	C	Pcs/Pkg
C 7302	SKM-77	3-1/4"	2-3/4"	3-7/8"	20

SIF 50MM (2") FIXED OFFSET



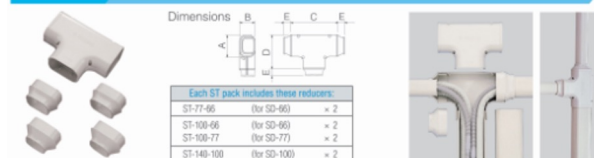
Code No.	Item No.	A	B	Pcs/Pkg
C 0417	SIF-77	3-3/8"	2-3/4"	10
C 0418	SIF-100	4-3/8"	3"	10

SDR REDUCER



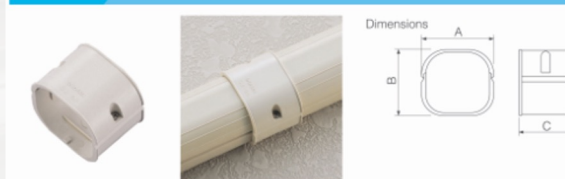
Code No.	Item No.	A	B	C	D	E	Pcs/Pkg
C 0477	SDR100-77	2-5/8"	3"	3-1/4"	4-1/4"	2-5/8"	20
C 0478	SDR140-100	3"	3-3/8"	4-3/8"	5-7/8"	4"	10

ST TEE



Code No.	Item No.	A	B	C	D	E	Pcs/Pkg
C 0462	ST-77	3-3/8"	2-3/4"	6-1/2"	5"	1-1/4"	10
C 0461	ST-100	4-3/8"	3-1/8"	7-7/8"	6-1/8"	1-3/8"	10
C 0463	ST-140	5-7/8"	3-1/2"	9-7/8"	7-7/8"	1-3/8"	5

SJ COUPLER



Code No.	Item No.	A	B	C	Pcs/Pkg*
C 0442	SJ-77	3-3/8"	2-3/4"	2"	60 (20)
C 0443	SJ-100	4-3/8"	3"	2-5/8"	20 (20)
C 0444	SJ-140	5-3/4"	3-3/8"	3-5/8"	10 (10)

*() shows quantities of Gray, White, Black, and Brown.

SLIMDUCT™ SD

Full Product Line

SE END FITTING



Code No.	Item No.	A	B	C	D	E	Pcs/Pkg*
C 0449	SE-77	2-1/8"	1-3/4"	1-7/8"	3-1/4"	2-3/4"	60 (20)

* () shows quantities of Gray, White, Black, and Brown.

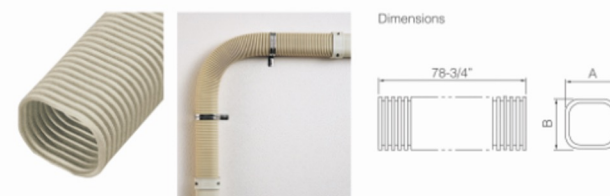
SFS SADDLE for FLEXIBLE ELL SF



Code No.	Item No.	A	B	D	E	Pcs/Pkg
C 0612	SFS-77	3"	2-1/2"	3/4"	1/4"	60
C 0613	SFS-100	4"	2-7/8"	7/8"	3/8"	40
C 0614	SFS-140	5-3/4"	3-3/8"	7/8"	3/8"	40

■ Material ... SUS304

SF 2M (78-3/4") FLEXIBLE ELL without End Cuffs



Code No.	Item No.	A	B	Pcs/Pkg
C 0460	SF-77-2000	3"	2-1/2"	10

■ Material ... PE *Use only in conjunction with SFJ Coupler and SFS Clamp.

SWC WALL FLANGE



Code No.	Item No.	A	B	C	D	E	F	G	Diameter of core drill	Pcs/Pkg
C 0482	SWC-77	3-3/8"	2-7/8"	5"	4-5/8"	3-1/4"	4-3/8"	3-5/8"	3-3/8"	100
C 0483	SWC-100	4-3/8"	3-1/8"	6-7/8"	5-3/4"	4-1/8"	5-5/8"	4-1/2"	4-3/8"	50
C 0484	SWC-140	5-7/8"	3-1/2"	8-3/4"	7-1/8"	5-3/4"	7-3/4"	6-1/8"	5-3/4"	20

■ Material ... ABS

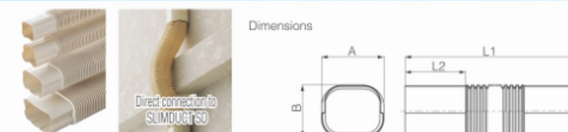
SP SOFFIT INLET



Code No.	Item No.	A	B	C	D	E	Pcs/Pkg
C 7342	SP-77	3-1/4"	2-3/4"	4-3/8"	5-1/8"	4"	20
C 7343	SP-100	4-1/4"	3"	5-3/8"	5-1/2"	4-1/4"	10
C 7344	SP-140	5-3/4"	3-3/8"	7"	5-7/8"	4-5/8"	5

■ Material ... ABS

SF FLEXIBLE ELL with End Cuffs



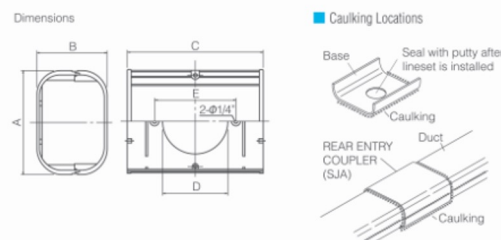
Code No.	Item No.	A	B	L1	L2	Pcs/Pkg
C 0453	SF-77-500	3"	2-1/2"	20-7/8"	3-1/2"	20
C 0454	SF-77-1000	3"	2-1/2"	41-3/4"	3-1/2"	20
C 0455	SF-100-800	4"	2-7/8"	31-1/2"	2-7/8"	10
C 0456	SF-140-800	5-5/8"	3-1/4"	31-1/2"	3-1/4"	5

■ Material ... PE (77), PP (100/140)

SLIMDUCT™ SD

Full Product Line

SJA REAR ENTRY COUPLER



Code No.	Item No.	A	B	C	D	E	Pcs/Pkg
C 0445	SJA-100	4-3/8"	3"	5-7/8"	2-7/8"	3-1/2"	20

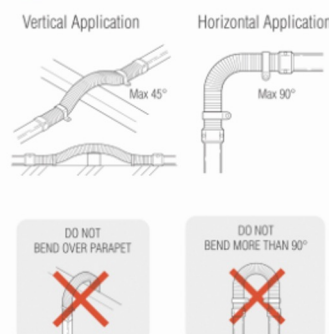
SFJ SF FLEXIBLE ADAPTOR



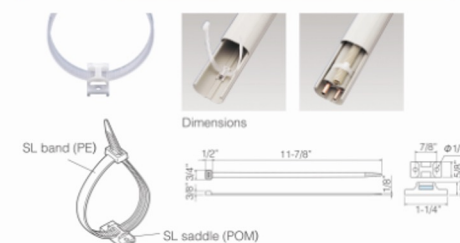
Code No.	Item No.	A	B	C	Pcs/Pkg
C 0437	SFJ-77	3-3/8"	2-5/8"	1-1/2"	20
C 0438	SFJ-100	4-3/8"	3"	1-5/8"	20

* Use in combination with SFS.
 * For secure joint, insert 2 corrugations of SF into SFJ adaptor.

Application Example for FLEXIBLE ELL



SL STRAP KIT For SLIMDUCT



Code No.	Item No.	Pcs/Pkg
C 04720	SL-300	500

■ Material ... PE (SL band), POM (SL saddle)
 *Do not overtighten strap! That may decrease insulation performance.

SEN END FITTING



Code No.	Item No.	A	B	C	Pcs/Pkg
C 0488	SEN-100	2-1/4"	4-1/2"	3"	20
C 0489	SEN-140	3-1/8"	6"	3-3/8"	10

For more information, refer to the catalog on our website.



Marketing Materials

Brochure



Slimduct SD Black Video



Slimduct SD Installation Video





Inaba Denko America

20130 S. Western Avenue Torrance, CA 90501

Tel: 310-328-3222

Fax: 310-328-2676

E-mail: info@inabadenko-america.com

Web: InabaDenko-America.com